

Flat 20 Alexandra Park House 28 Alexandra Road South, Whalley Range, Manchester,
M16 8HU



1-10 CENACLE HOUSE
1-24 ALEXANDRA PARK HOUSE
1-6 STANLEY HOUSE

JP&Brimelow
ESTATE AGENTS

Offers In The Region Of £200,000

****VIDEO TOUR AVAILABLE**** A light and spacious, TWO DOUBLE BEDROOM top floor apartment, set within this attractive detached purpose-built development. Situated opposite Alexandra Park in a leafy location in Whalley Range. Walking distance to nearby independent bars/restaurants including 'The Hilary Step' bar and 'Jam Street Cafe' on Upper Chorlton Road, a Tesco Metro is close by on Withington Road and excellent bus links on your doorstep giving you the commuter direct access into the City Centre or Manchester International Airport. In brief this impressive apartment accommodation comprises; a communal entrance hallway with stairs and lift to all floors, a private entrance hallway, an open plan lounge/dining room/fully fitted kitchen, two double bedrooms and a white three-piece family bathroom. The apartment benefits from communal lawned gardens, CCTV, a bike store, a balcony, double glazed throughout, warmed by gas fired central heating, secure gated parking to the rear and Alexandra Park is positioned opposite this development. Will suit a professional or a couple due to the size and location. OFFERED WITH NO VENDOR CHAIN. Early viewing is highly recommended.





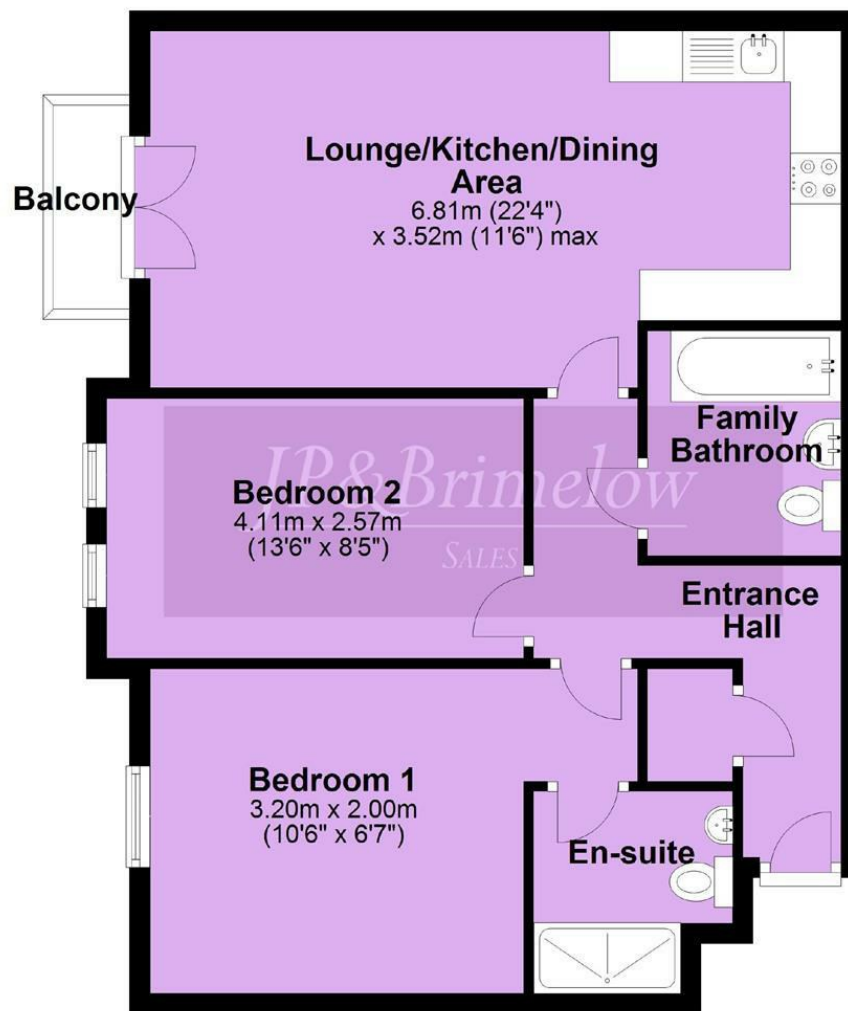
EPC Chart

Energy Efficiency Rating		Current	Potential
Very energy efficient - lower running costs			
(92 plus) A			
(81-91) B		79	81
(69-80) C			
(55-68) D			
(39-54) E			
(21-38) F			
(1-20) G			
Not energy efficient - higher running costs			
England & Wales		EU Directive 2002/91/EC	



Tenure: **Leasehold** Council Tax Band: **B**

Top Floor



Chorlton & Didsbury Ltd
 430 Barlow Moor Road, Chorlton, Manchester, M21 8AD
 Chorlton: 0161 882 2233 Didsbury: 0161 448 0622
 E: chorlton@jpbrimelow.co.uk www.jpbrimelow.co.uk



JP&Brimelow
 ESTATE AGENTS

NOTICE: J P & Brimelow Chorlton & Didsbury Ltd for themselves and for the vendors or lessors of this property whose agents they are give notice that:

- (i) the particulars are set out as a general outline only for the guidance of intending purchasers or lessees, and do not constitute, nor constitute part of, an offer or contract;
- (ii) all descriptions, dimensions, references to the condition and necessary permissions for use and occupation, and other details are given in good faith and are believed to be correct but any intending purchasers or tenants should not rely on them as statements or representations of fact but must satisfy themselves by inspection or otherwise as to the correctness of each of them;
- (iii) no person in the employment of JP & Brimelow Ltd has any authority to make or give any representation or warranty whatever in relation to this property.



Follow us on Twitter @jpandbrimelows